

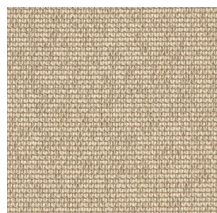
Sustainability

Certifications & Programs

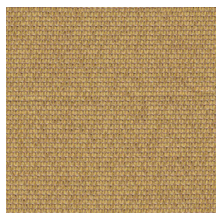
Healthier Hospitals, HPD,
LEED, Mindful Materials,
Oeko-Tex

Material Health

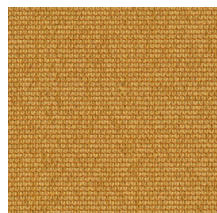
Low VOC, No
Antimicrobials, No Flame
Retardants, No PFAS



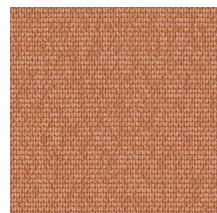
Oat
3026-101



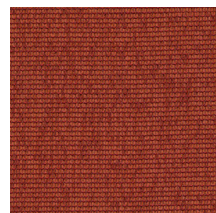
Butter
3026-201



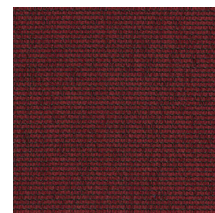
Marigold
3026-202



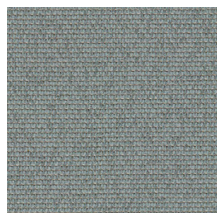
Cantaloupe
3026-301



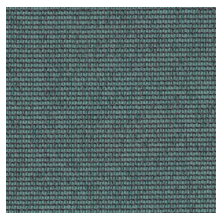
Crabapple
3026-302



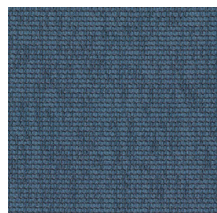
Berry
3026-303



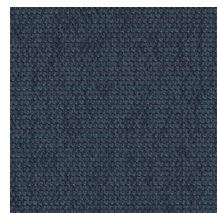
Sky
3026-401



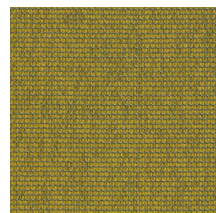
Pool
3026-402



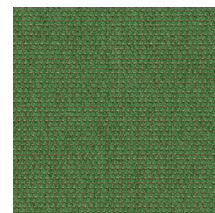
French Blue
3026-403



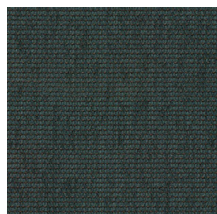
Aegean
3026-404



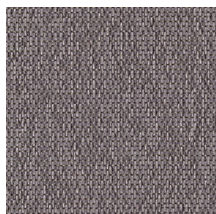
Pear
3026-501



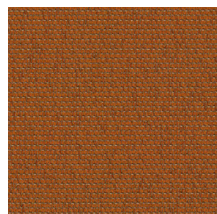
Turf
3026-502



Dark Teal
3026-503



Lilac
3026-601



Squash
3026-701



Dove
3026-801



Birch
3026-802



Charcoal
3026-803


Product specification

Name	3026
Color	Oat
Number	3026-101
Product Category	Upholstery, Panel, Multiuse
Material Type	Woven
Content	100% Polyester
Width	55 inches (140 cm)
Weight	14.50 ounces/linear yard (450 grams/linear meter)
Average Bolt Size	54 yards
Shown Railroaded	Yes
Origin	Germany
Warranty	3 years
Introduction Date	04/06/2023

Design

Pattern Type	Texture
--------------	---------

Performance

Abrasion	100,000 Wyzenbeek double rubs
Flammability	ASTM E 84 Unadhered Class A, CA TB 117-2013, UL Listed
Lightfastness	40 hours
Performance Standards	
Acoustics	Acoustically Transparent, NRC Panel: 0.85, SAA Panel: 0.86
Cleaning Code	Water-based/Solvent (WS)
Approved Disinfectants	Bleach 4:1 Isopropyl Alcohol, 70% Lysol® All-Purpose Cleaner Lysol® Disinfectant Spray Lysol® Disinfecting Wipes (all scents) Sani-Cloth® AF3 Germicidal Disposable Wipes Sani-Cloth® Bleach Germicidal Disposable Wipes Super Sani-Cloth® Germicidal Disposable Wipes Virex® II 256 Virex® Plus Virex® Tb