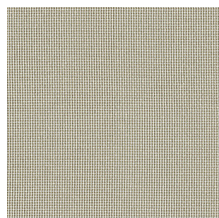


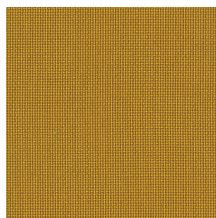
## Sustainability

Certifications & Programs Healthier Hospitals, HPD,  
LBC Red List Compliant,  
LEED, Mindful Materials, No  
Prop 65 Chemicals, WELL

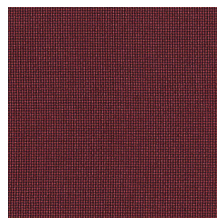
Material Health Low VOC, No  
Antimicrobials, No Flame  
Retardants, No PFAS



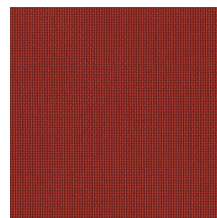
Flax  
3762-101



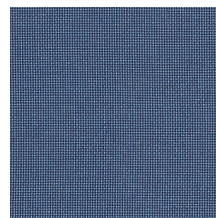
Golden  
3762-202



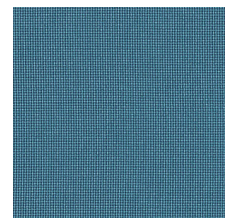
Shiraz  
3762-301



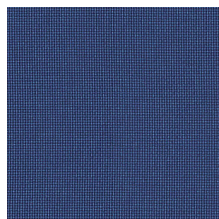
Ruby  
3762-302



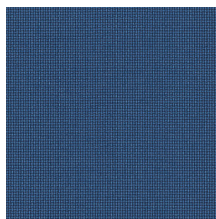
Lake  
3762-401



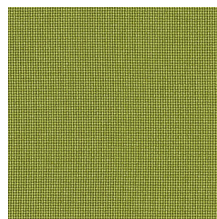
Freshwater  
3762-402



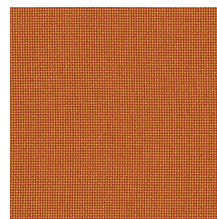
Atlantic  
3762-403



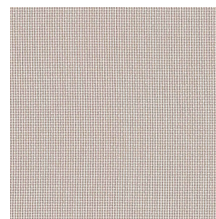
Royal  
3762-404



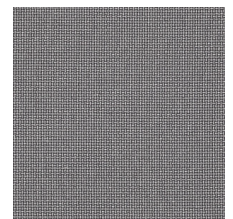
Parsley  
3762-502



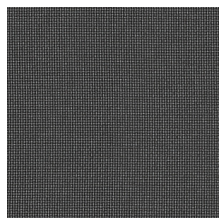
Tangelo  
3762-702



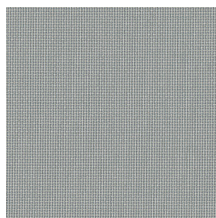
Soapstone  
3762-801



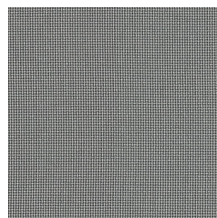
Penguin  
3762-802



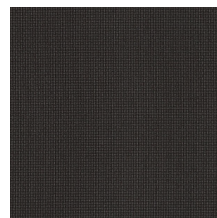
Seal  
3762-803



Glacier  
3762-804



Elephant  
3762-805



Night Sky  
3762-806

## Crossweave

3762

34% Polyester, 66% Polyester (Postconsumer Recycled, Solution Dyed)

Upholstery, Panel, Multiuse


### Product specification

Name	Crossweave
Color	Flax
Number	3762-101
Product Category	Upholstery, Panel, Multiuse
Material Type	Woven
Content	34% Polyester, 66% Polyester (Postconsumer Recycled, Solution Dyed)
Width	54 inches (137 cm)
Weight	16.50 ounces/linear yard (512 grams/linear meter)
Average Bolt Size	45 yards
Shown Railroaded	No
Origin	United States
Warranty	5 years
Introduction Date	01/15/2016

### Design

Designer	West Elm
Collection	West Elm
Pattern Type	Texture

### Performance

Abrasion	100,000 Wyzenbeek double rubs
Flammability	ASTM E 84 Unadhered Class A, CA TB 117-2013, UL Listed
Lightfastness	40 hours
Performance Standards	
Acoustics	Acoustically Transparent, NRC Panel: 0.85, SAA Panel: 0.85
Cleaning Code	Water-based/Solvent (WS)
Approved Disinfectants	Isopropyl Alcohol, 70% Lysol® All-Purpose Cleaner Lysol® Disinfectant Spray Lysol® Disinfecting Wipes (all scents) Oxivir® 1 Wipes Oxivir® 1 Oxivir® Tb Wipes Oxivir® Tb Sani-Cloth® AF3 Germicidal Disposable Wipes Super Sani-Cloth® Germicidal Disposable Wipes Virex® II 256