

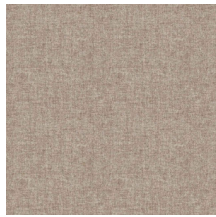
Sustainability

Certifications & Programs Healthier Hospitals, HPD,
LBC Red List Compliant,
LEED, Mindful Materials, No
Prop 65 Chemicals, WELL

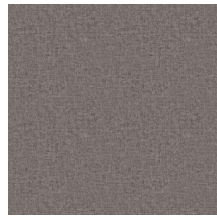
Material Health Low VOC, No
Antimicrobials, No Flame
Retardants, No PFAS



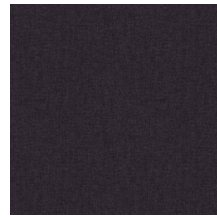
Creme
3797-101



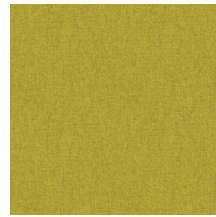
Antelope
3797-102



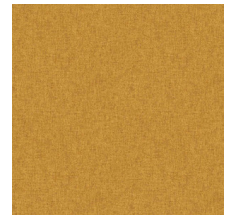
Medium Brown
3797-103



Brown
3797-104



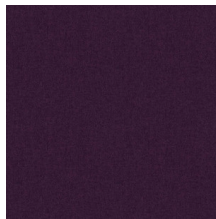
Yellow Green
3797-201



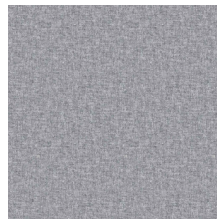
Yellow Gold
3797-202



Dark Red
3797-301



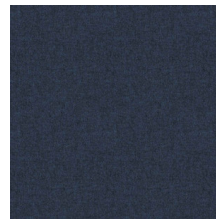
Wine
3797-302



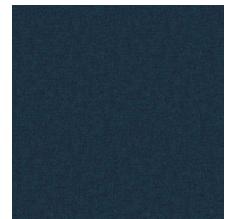
Blue Stone
3797-401



Turquoise
3797-402



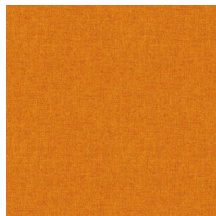
Blue
3797-403



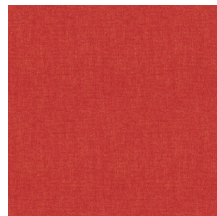
Navy
3797-404



Snap Pea
3797-501



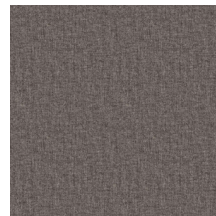
Tangerine
3797-701



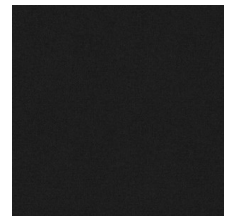
Flame
3797-702



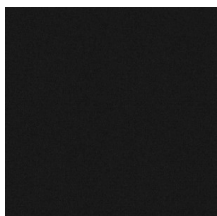
Light Grey
3797-801



Medium Grey
3797-802



Charcoal
3797-803



Black
3797-804

Brushed Flannel

3797

100% Polyester

Upholstery, Panel, Multiuse


Product specification

Name	Brushed Flannel
Color	Creme
Number	3797-101
Product Category	Upholstery, Panel, Multiuse
Material Type	Woven
Content	100% Polyester
Width	56 inches (142 cm)
Weight	12.50 ounces/linear yard (388 grams/linear meter)
Average Bolt Size	55 yards
Shown Railroaded	No
Origin	China
Warranty	5 years
Introduction Date	06/17/2016

Design

Designer	West Elm
Collection	West Elm
Pattern Type	Solid

Performance

Abrasion	45,000 Martindale cycles
Flammability	ASTM E 84 Unadhered Class A, CA TB 117-2013, CAN/ULC-S102, UL Listed
Lightfastness	40 hours
Performance Standards	
Acoustics	Acoustically Transparent, NRC Panel: 0.80, SAA Panel: 0.79
Cleaning Code	Water-based/Solvent (WS)
Approved Disinfectants	Isopropyl Alcohol, 70% Lysol® All-Purpose Cleaner Lysol® Disinfectant Spray Lysol® Disinfecting Wipes (all scents) Oxivir® 1 Wipes Oxivir® 1 Oxivir® Tb Wipes Oxivir® Tb Sani-Cloth® AF3 Germicidal Disposable Wipes Super Sani-Cloth® Germicidal Disposable Wipes Virex® II 256