

Sustainability

Certifications & Programs

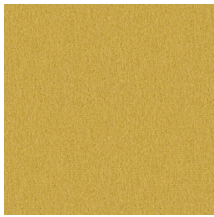
Healthier Hospitals, HPD,
LBC Red List Compliant,
LEED, Mindful Materials, No
Prop 65 Chemicals, WELL

Material Health

Low VOC, No
Antimicrobials, No Flame
Retardants, No PFAS



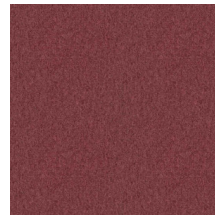
Teak
4116-103



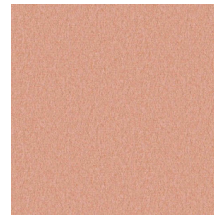
Sunflower
4116-201



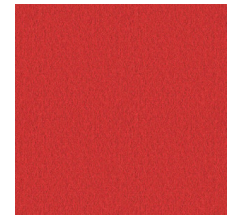
Poppy
4116-301



Crimson
4116-302



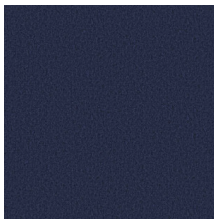
Rose Quartz
4116-303



Red
4116-304



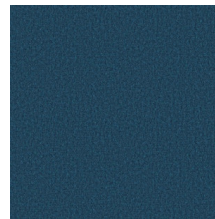
Mallard
4116-401



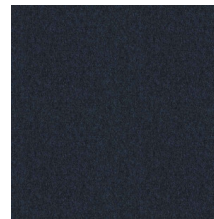
Indigo
4116-402



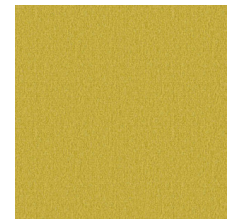
Sea Salt
4116-403



Dark Mallard
4116-404



Navy
4116-405



Citron
4116-501



Avocado
4116-502



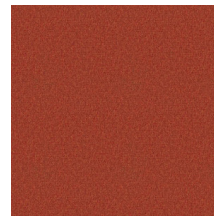
Olivine
4116-504



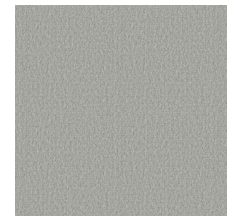
Spruce
4116-505



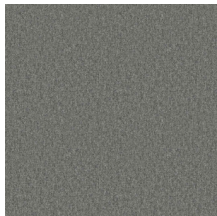
Tangelo
4116-701



Rust
4116-703



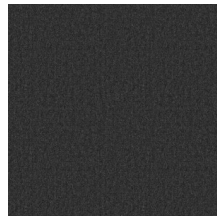
Cumulus
4116-803



Pewter
4116-804



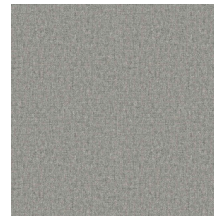
Gunmetal
4116-805



Ink
4116-806



Storm Cloud
4116-807



Grey
4116-808

Billiard Panel

4116

100% Polyester

Upholstery, Panel, Multiuse


Product specification

Name	Billiard Panel
Color	Teak
Number	4116-103
Product Category	Upholstery, Panel, Multiuse
Material Type	Woven
Content	100% Polyester
Width	54 inches (137 cm)
Weight	15.00 ounces/linear yard (465 grams/linear meter)
Average Bolt Size	55 yards
Shown Railroaded	No
Origin	Taiwan
Warranty	5 years
Introduction Date	06/10/2014

Design

Pattern Type	Texture
--------------	---------

Performance

Abrasion	60,000 Wyzenbeek double rubs
Flammability	ASTM E 84 Unadhered Class A, CA TB 117-2013, CAN/ULC-S102, UL Listed
Lightfastness	40 hours
Performance Standards	
Acoustics	Acoustically Transparent, NRC Panel: 0.85, SAA Panel: 0.86
Cleaning Code	Water-based/Solvent (WS)
Approved Disinfectants	Crypton® Disinfectant & Deodorizer Isopropyl Alcohol, 90% Lysol® All-Purpose Cleaner Lysol® Disinfectant Spray Lysol® Disinfecting Wipes (all scents) Oxivir® 1 Wipes Oxivir® 1 Oxivir® Tb Wipes Oxivir® Tb OxyCide™ Daily Disinfectant Cleaner Sani-Cloth® AF3 Germicidal Disposable Wipes Super Sani-Cloth® Germicidal Disposable Wipes Virex® II 256