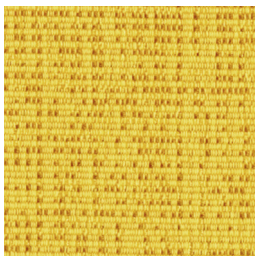


Panel | Acoustic

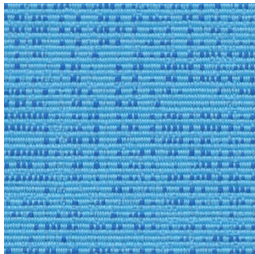
# Marin 1300



Sunfish  
1153



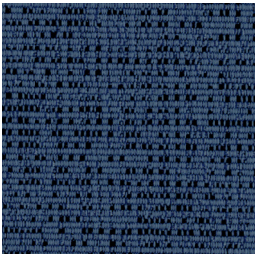
Mangrove  
1154



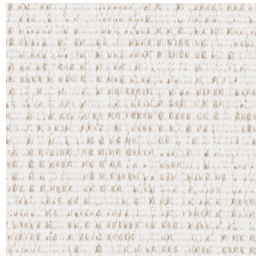
Dolphin  
1147



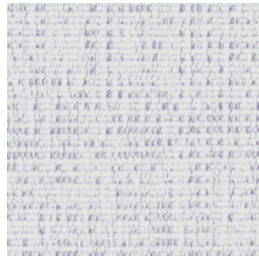
Swell  
1155



Benthic  
1157



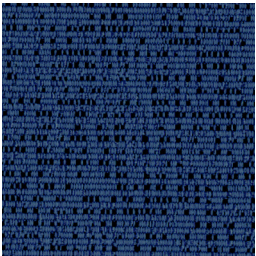
Great White  
1143



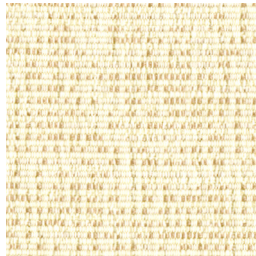
Ice Edge  
1145



Clownfish  
1152



Intertidal  
1156



Tusk  
1144



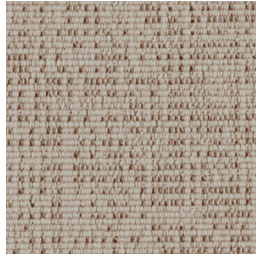
Sea Glass  
1146



Red Snapper  
1151



Carrageen  
1150



Sand  
1142



Pelican  
1141



Grey Whale  
1148



Blacktip  
1149

duvalt**ex**

# Marin 1300

## Specifications

Content	90% post-consumer recycled polyester including ocean waste 10% polyester
Weight	12.5 ± 1.0 oz./lin. yd
Width	67" min. useable
Repeat	horizontal 12.76" vertical 19.1"

## Cleaning Code

Standard Care Label W-S. Clean with water based cleaning agents, foam or pure, water free solvents. Vacuuming or light brushing is recommended to prevent dust and soil buildup. May also be disinfected with hydrogen peroxide, alcohol, and quaternary ammonium (quat) based cleaners.

## Miscellaneous

- Application testing of this product is recommended.
- Colors may vary between dye lots.
- This is a directional fabric.

Proudly woven in North America supporting our local communities.

## Sustainability

**OCEAN WASTE** CLEAN IMPACT TEXTILES™ tackle one of the most pressing environmental issues we face today: pollution of oceans by plastics.

**SEAQUAL**  
INITIATIVE

By partnering with the SEAQUAL INITIATIVE, we transform ocean waste into amazing textiles.

Duvaltex is an official and authorized advertiser of SEAQUAL® YARN, the SEAQUAL INITIATIVE and their related trademarks, under licence agreement. Only SEAQUAL licensees are permitted to publicly advertise details about SEAQUAL trademarks.



**Guilford of Maine**  
A duvaltex brand



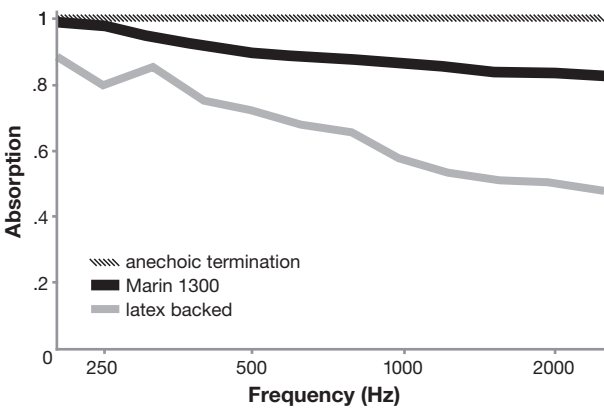
## Performance

	Colorfastness to light (AATCC 16.3 Option 3) Grade 4 min. at 40 hours
	Colorfastness to crocking (AATCC 8) Grade 4 min. dry & Grade 3 min. wet
	Breaking Strength (ASTM D5034) 245 lbf min. warp and 170 lbf min. fill
	Flammability ASTM E84 Class I or A

## Acoustical Performance

The plot below summarizes impedance tube measurements of absorption of an anechoic termination and various fabrics in front of the anechoic termination.

Acoustical Performance for Panel Applications  
(ISO 10534-2)



NRC of anechoic termination	1.00
NRC of fabric in front of anechoic termination	.90



This pattern is included in the underwriters laboratory panel fabric recognition program. Additional testing of this U.L. recognized fabric is not required on approved panels from participating manufacturers.

**USA & INTERNATIONAL**  
Tel 800-544-0200  
Fax 616-554-2255

**CANADA**  
Tel 418 227-9897  
Fax 418 227-9899

For samples, visit [guilfordofmaine.com](http://guilfordofmaine.com)