

CEILING MOUNTING: SERENADE 1"-2" CLOUD WITH THREADED INSERT AND SWIVEL CABLE LOCK



APPLICATION

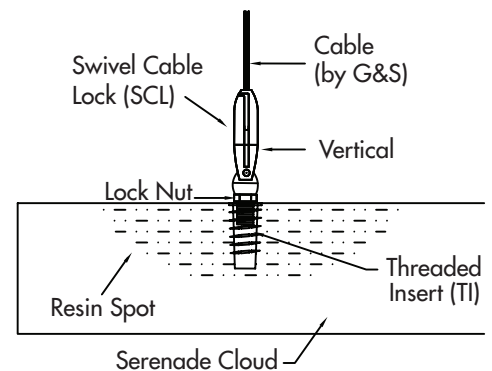
Mounting 1" and 2" Serenade Clouds to a ceiling using a threaded insert, swivel cable lock and cable.

DESCRIPTION

This installation technique uses a threaded insert (TI) set in place by G&S on the back of the Serenade Cloud. A swivel cable lock (SCL) is screwed into the threads (by others). DO NOT OVER TIGHTEN. Installation is as follows:

1. Screw the SCL into the TI.
2. Confirm the swivel is in the vertical position when tightened.
3. Insert blank cable into SCL. Confirm that it is locked.
4. Attach cable to ceiling structure above using appropriate fasteners (by others).

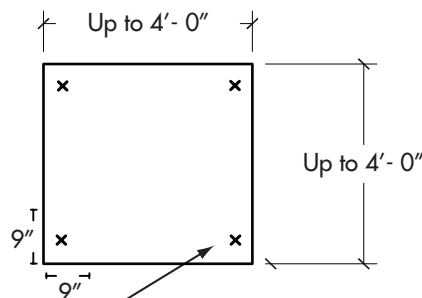
MOUNTING DETAIL



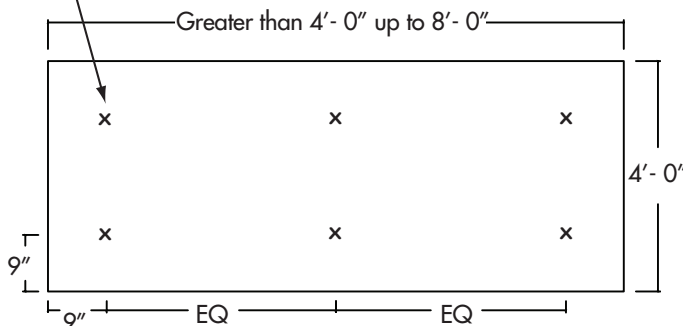
Optional

- 10' Aircraft Cable
 - Longer lengths available by request
- Threaded Swivel
 - TI takes a 1/4" 20 thread

Provided by G&S



x = Threaded Insert



Note: Less than 3'-6" in either direction will require a custom layout.

Controlling Sound Beautifully

800-737-0307 • 636-225-8800 • fax 636-225-2966 • www.gsacoustics.com

