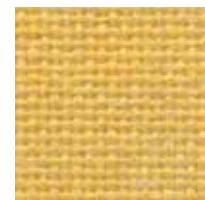


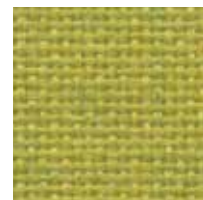
BLEACH CLEANABLE

PANEL | ACOUSTIC

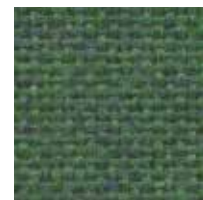
FR701®
2100



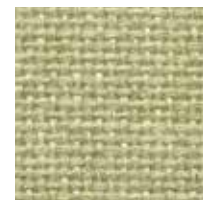
Yellow
744



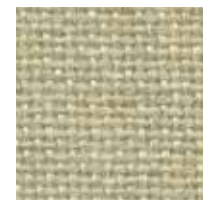
Chartreuse
734



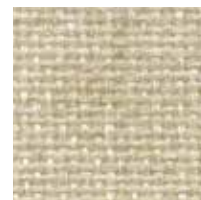
Fir
743



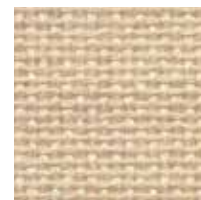
Leaf
755



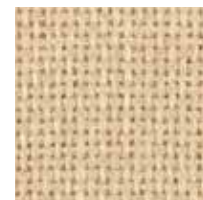
Dune
749



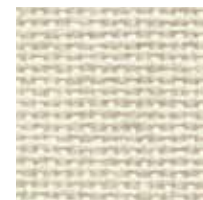
Wheat
130



Bone
748



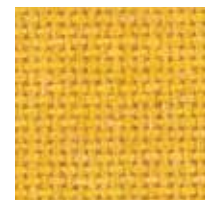
Buff
460



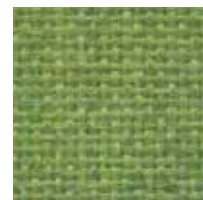
Eggshell
144



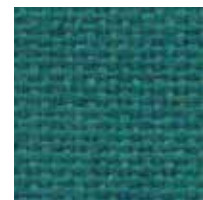
White
224



Sunshine
797



Lime
721



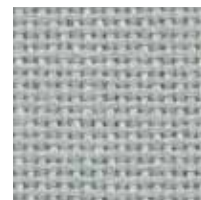
Teal
742



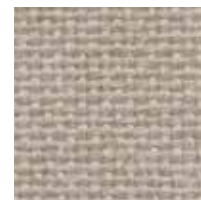
Green Neutral
402



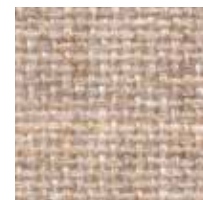
Stream
757



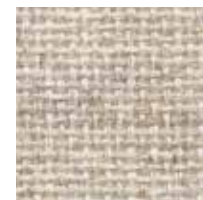
Eucalyptus
468



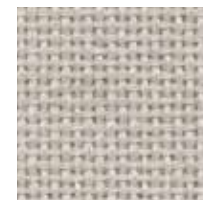
Desert Sand
758



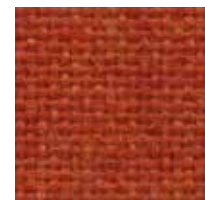
Apricot Neutral
404



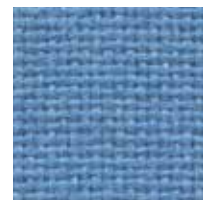
Quartz
380



Pearl
481



Orange
746



Sky
740



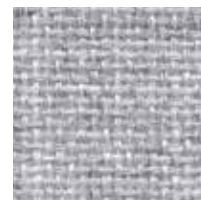
Sapphire
745



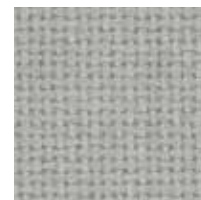
Blue Spruce
467



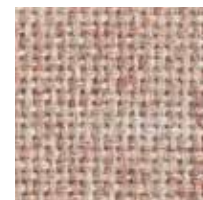
Verte Papier
561



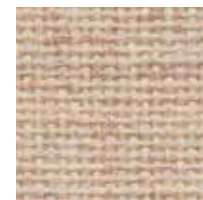
Blue Papier
539



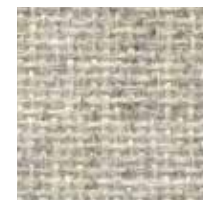
Coin
794



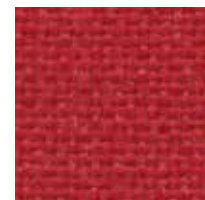
Cherry Neutral
400



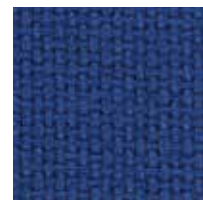
Vanilla Neutral
403



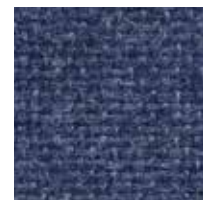
Opal
394



Cardinal
738



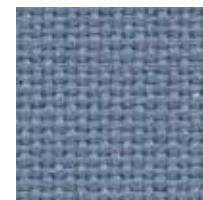
Cobalt
420



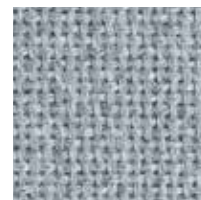
Baltic
153



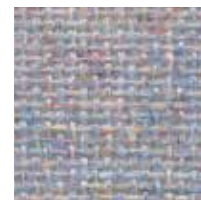
Wedgewood
150



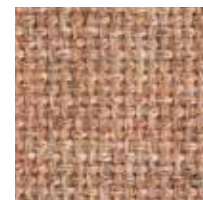
Bayberry
486



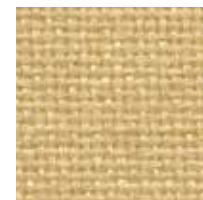
Crystal Blue
175



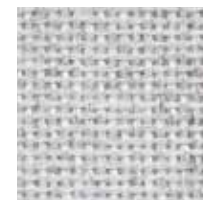
Blue Neutral
401



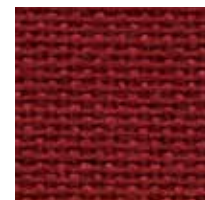
Cinnabar
422



Straw
747



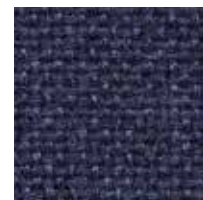
Silver Papier
538



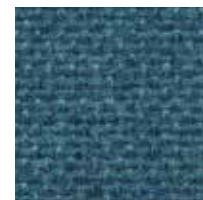
Red
799



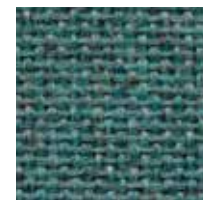
Iris
798



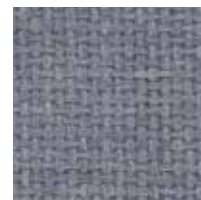
Blue Plum
553



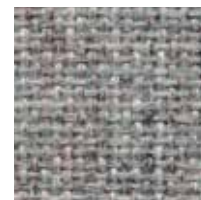
Ultramarine
470



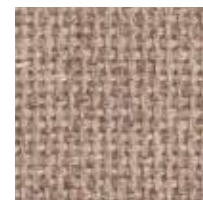
Aquamarine
381



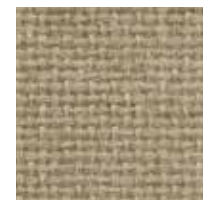
Steel Grey
471



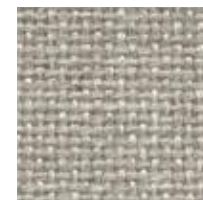
Grey Mix
238



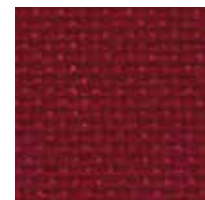
Pumice
423



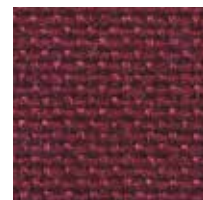
Light Moss
754



Cement Mix
750



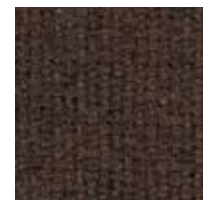
Claret Accent
418



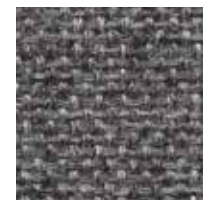
Deep Burgundy
556



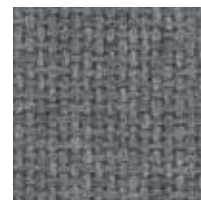
Black
408



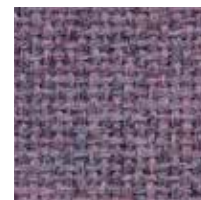
Chocolate
793



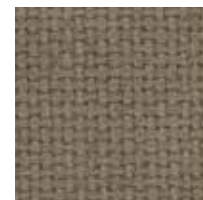
Medium Grey
298



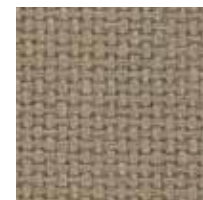
Flannel
795



Amethyst
424



Moleskin
796



Earth
792



Silver Neutral
406

FR701® 2100

Specifications

Content	100% post-consumer recycled polyester
Weight	16.0 ± 0.5 oz./lin. yd.
Width	66" min. useable
Repeat	none

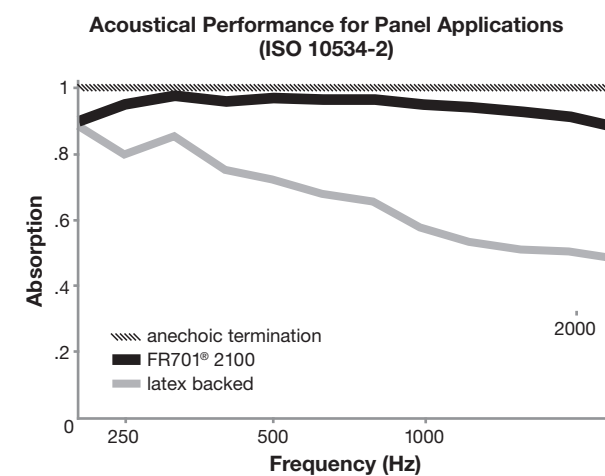
Cleaning Code

Standard Care Label W-S. Clean with water based cleaning agents, foam or pure, water free solvents. Vacuuming or light brushing is recommended to prevent dust and soil buildup.

Bleach Cleanable - May be cleaned with a 10% bleach-to-water solution. Rinse well after cleaning. May also be cleaned with hydrogen peroxide, alcohol, and quaternary ammonium (quat) based cleaners.


Acoustical Performance


The plot below summarizes impedance tube measurements of absorption of an anechoic termination and various fabrics in front of the anechoic termination.





NRC of anechoic termination	1.00
NRC of fabric in front of anechoic termination	0.95

Performance



-  Colorfastness to Light (AATCC 16.3 Option 3)
Grade 4 min. at 40 hours

-  Colorfastness to Crocking (AATCC 8)
Grade 4 min. dry & Grade 3 min. wet

-  Breaking Strength (ASTM D5034)
150 lbf min. warp and fill

-  Flammability (ASTM E84)
Class I or A

Sustainability

-  **100% recycled and recyclable**
Terratex is a registered trademark of Duvaltex
-  **facts™ Silver**

Miscellaneous

Proudly woven in North America supporting our local communities. Application testing of this product is recommended. Colors may vary between dye lots. This is a non-directional fabric.

Visit guilfordofmaine.com for samples.

 This pattern is included in the underwriters laboratory panel fabric recognition program. Additional testing of this U.L. recognized component fabric is not required on approved panels from participating manufacturers.

*Certification Marks owned by the Association for Contract Textiles, Inc.