
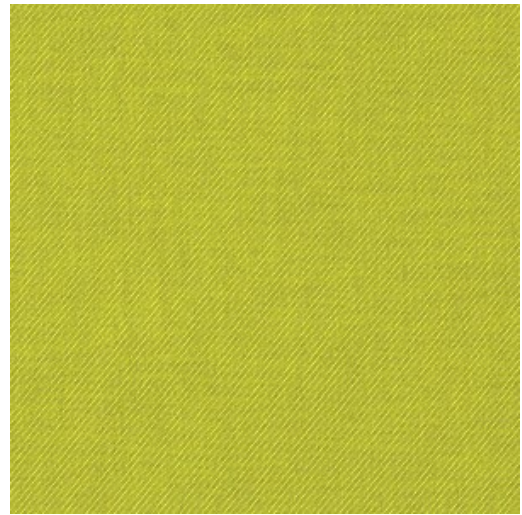


Use Upholstery, Panel Fabrics
 Content 100% Polyester (Postconsumer Recycled)
 Finish Stain Repellent
 Cleaning Water-based/Solvent (WS)
 Weight 12.7 ounces/linear yard
 Width 54 inches (137 cm)
 Shown Railroaded No
 Flammability ASTM E 84 Unadhered Class A, CA TB 117-2013, NFPA 260
 Abrasion 100,000 Wyzenbeek double rubs (CD)
 Lightfastness 40 hours
 ACT 
 LEED Material Ingredients
 Sustainable Logistics Ships Carbon Neutral
 Warranty 5 years
 Origin United States



Chalk
3468-101



Nutmeg
3468-104



Mango
3468-202



Cherry
3468-304



Port
3468-305



Cerulean
3468-402



Pool
3468-403



Macaw
3468-404



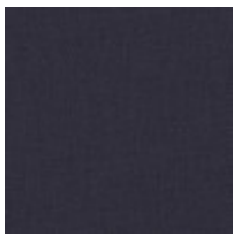
Deep Ocean
3468-405



Spruce
3468-406



Navy
3468-407



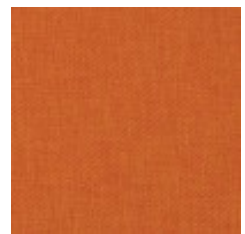
Ink
3468-408



Olive
3468-503



Concord
3468-604



Solar
3468-701





Persimmon
3468-703



Mist
3468-801



Pumice
3468-802



Pebble
3468-803



Ash
3468-805



Stone
3468-806



Pewter
3468-808



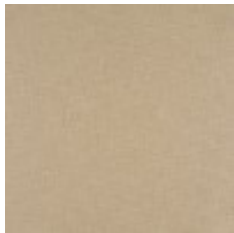
Graphite
3468-810



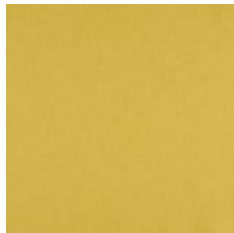
Cobblestone
3468-811



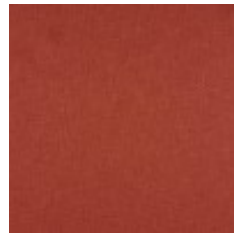
Carbon
3468-812



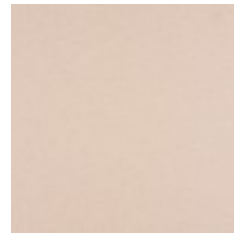
Oat
3468-108



Finch
3468-204



Terracotta
3468-307



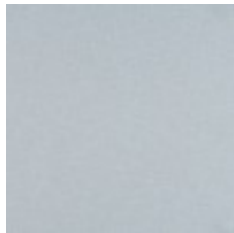
Slipper
3468-308



Cadet
3468-409



Dutch Blue
3468-410



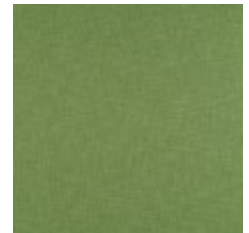
Blue Heather
3468-411



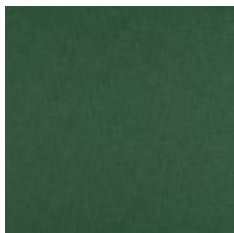
Aqua
3468-412



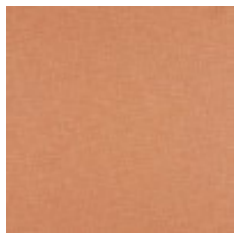
Lamb's Ear
3468-504



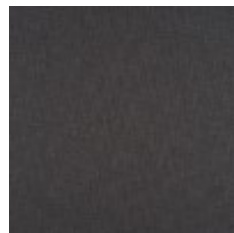
Lawn
3468-509



Billiard
3468-510



Peach
3468-704



Shale
3468-813



Grey
3468-814



Fog
3468-815

