

QUADRATICWAVE DIFFUSER - (QWD)

QuadraticWave Diffusers (QWD) are two-dimensional, quadratic diffusers that maintain an asymmetrical design which diffuses sound waves more effectively than symmetrical sound diffuser designs. The constantly varying height and hemispheric diffusion pattern make QuadraticWave Diffusers very effective at scattering sounds in the mid to high frequencies, primarily between 1,600hz and 7,500hz.

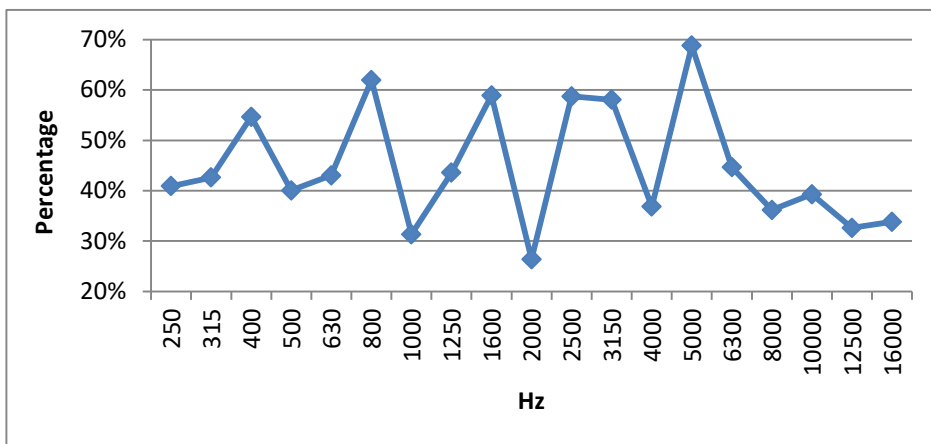
QuadraticWave Diffusers use an implied edge symmetry which creates the appearance of a contiguous wave pattern installation across a ceiling or wall.

These sound diffusers can be installed directly to ceilings or walls. They can also be installed in standard 2'x2' grid systems.



SOUND DISTRIBUTION PERCENTAGE

Hz	500	800	1600	2500	5000	10000
QWD	40%	62%	59%	59%	69%	39%



SOUND ABSORPTION

Mounting	Hz						N.R.C.
	125	250	500	1000	2000	4000	
Type A Mount	.55	.24	.22	.16	.10	.13	.20
E-400 Mount	.40	.26	.26	.25	.17	.15	.25
E-400 w/ Insulation	.41	.24	.25	.25	.17	.15	.25

CORE

0.125 Thermoformed co-polymer (recyclable)

Type A Mount: N.R.C. = .20

E-400 Mount: N.R.C. = .25

E-400 with Insulation: N.R.C. = .25

SHAPES

Asymmetric Wave Design

SIZES

2'x2'

MOUNTING

15/16" Lay-in ceiling grid,
Direct mount to ceiling or wall

FINISH

Textured white

FLAMMABILITY

All components have a Class "A" rating per ASTM E84

*Controlling
Sound
Beautifully*