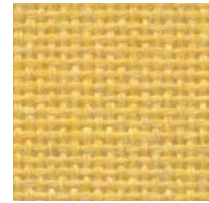


FR701[®] 2100

PANEL | ACOUSTIC



Yellow
744



Chartreuse
734



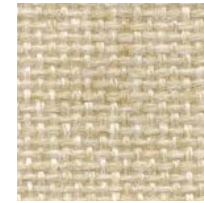
Fir
743



Leaf
755



Dune
749



Wheat
130



Bone
748



Buff
460



Eggshell
144



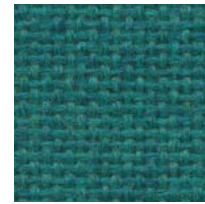
White
224



Sunshine
797



Lime
721



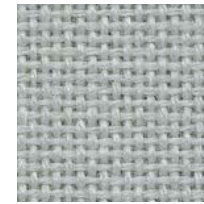
Teal
742



Green Neutral
402



Stream
757



Eucalyptus
468



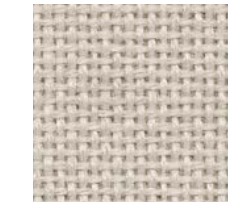
Desert Sand
758



Apricot Neutral
404



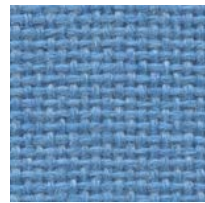
Quartz
380



Pearl
481



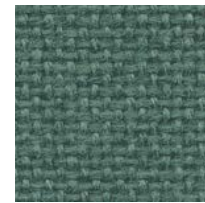
Orange
746



Sky
740



Sapphire
745



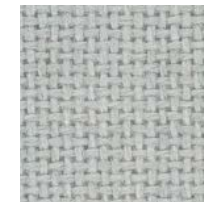
Blue Spruce
467



Verte Papier
561



Blue Papier
539



Coin
794



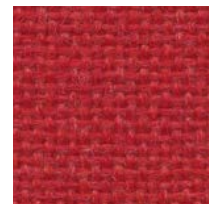
Cherry Neutral
400



Vanilla Neutral
403



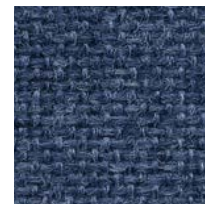
Opal
394



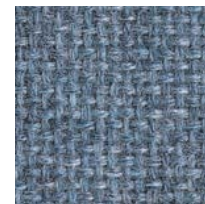
Cardinal
738



Cobalt
420



Baltic
153



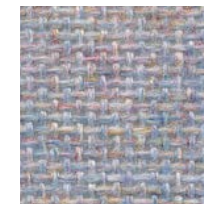
Wedgewood
150



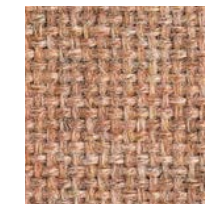
Bayberry
486



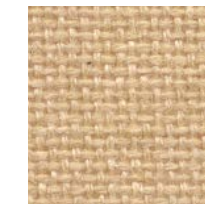
Crystal Blue
175



Blue Neutral
401



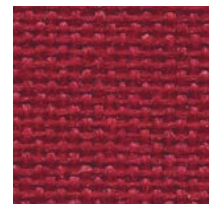
Cinnabar
422



Straw
747



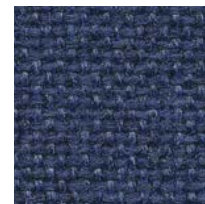
Silver Papier
538



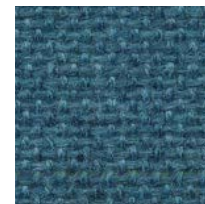
Red
799



Iris
798



Blue Plum
553



Ultramarine
470



Aquamarine
381



Steel Grey
471



Grey Mix
238



Pumice
423



Light Moss
754



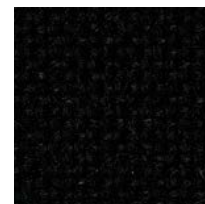
Cement Mix
750



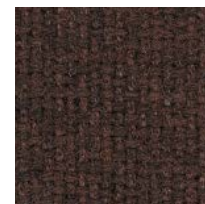
Claret Accent
418



Deep Burgundy
556



Black
408



Chocolate
793



Medium Grey
298



Flannel
795



Amethyst
424



Moleskin
796



Earth
792



Silver Neutral
406

FR701® 2100

Specifications

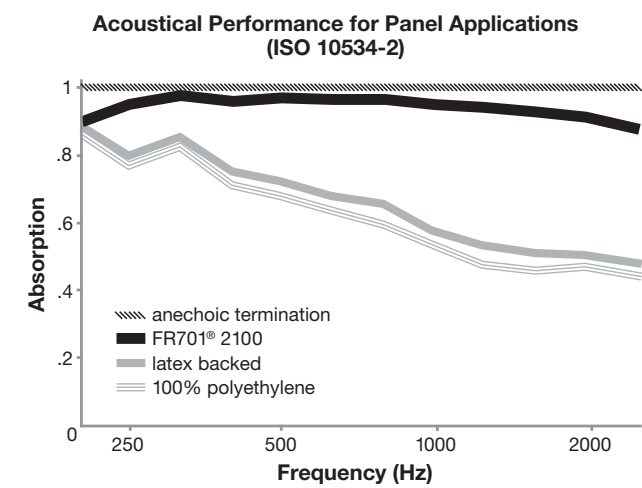
Content	100% post-consumer recycled polyester
Weight	16.0 ± 0.5 oz./lin. yd.
Width	66" min. useable
Repeat	none

Cleaning Code

Standard Care Label W-S. Clean with water based cleaning agents, foam or pure, water free solvents. Vacuuming or light brushing is recommended to prevent dust and soil buildup.

Acoustical Performance

The plot below summarizes impedance tube measurements of absorption of an anechoic termination and various fabrics in front of the anechoic termination.



NRC of anechoic termination	1.00
NRC of fabric in front of anechoic termination	0.95

Performance

- Colorfastness to Light (AATCC 16.3 Option 3)
Grade 4 min. at 40 hours

- Colorfastness to Crocking (AATCC 8)
Grade 4 min. dry & Grade 3 min. wet

- Breaking Strength (ASTM D5034)
150 lbf min. warp and fill

- Flammability (ASTM E84)
Class 1 or A

Sustainability

- 100% recycled and recyclable**
Terratex is a registered trademark of Duvaltex
- facts™**
Silver

Miscellaneous

Proudly woven in North America supporting our local communities.
Application testing of this product is recommended. Colors may vary between dye lots. This is a non-directional fabric.

Visit guilfordofmaine.com for samples.

This pattern is included in the underwriters laboratory panel fabric recognition program. Additional testing of this U.L. recognized component fabric is not required on approved panels from participating manufacturers.

*Certification Marks owned by the Association for Contract Textiles, Inc.